



NAINI PAPERS LIMITED

Corporate Office : Station Road, Kashipur - 244 713 (UA) ☎ 275872, 275972 📠 : (05947) 275872

Works : 7th Km. Stone Moradabad Road, Kashipur - 244 713 ☎ 275913, 275914, 279360 📠 : 260831, 275914

Regd. Office : 18, Nav Kranti Apartments, Plot No. 75 Patparganj, Delhi ☎ 22224593, 22224583 Extn. 218

E-mail: etp@nainigroup.com

Ref: NPL/UEPPCB/2022/09

Sep. 30, 2022



To,

Regional Officer,
UEPPCB Regional Office,
Chamunda Complex,
Ramnagar Road,
Kashipur, (U.S. Nagar), Uttarakhand.

Subject- Submission of Environmental Statement for the Financial Year 2021-22.

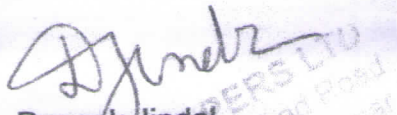
Dear Sir

We enclosed herewith the Environmental Statement of M/s Naini Papers Ltd (PM1 & PM2) for the Financial Year 2021-22 as per The Environmental (Protection) Rule 1986, Rule 14 in Form-V.

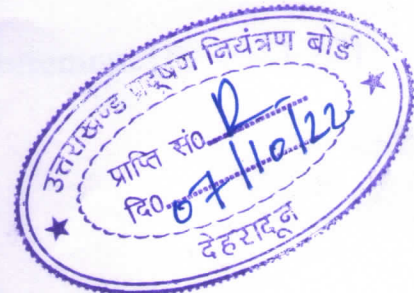
Kindly acknowledge the receipt of the same.

Thanks & Regards

For, Naini Papers Limited


Deepak Jindal
(GM- Environment)

CC- Environmental officer, UEPPCB Head Office, Gauradevi Paryawaran Bhawan Plot No-45B, ITPark Parishar Sahastradhara Road, Deharadun



NAINI PAPERS LIMITED (PM1 & PM2)

(FORM-V)

ENVIRONMENTAL STATEMENT

Environmental Statement for the financial year 2021 to 2022

PART-A

1	Name and address of the owner/occupier of the Industry Operation or Process	Sh. Pawan Agrawal (Managing Director) M/S Naini Papers Limited (PM1 & PM2) 7 th KM Stone, Moradabad Road Kashipur, Uttrakhand-244713			
2	Industry Category Primary- (STC Code) Secondary- (STC Code)	Red Category			
3	Production category –	Product	CCA Quantity		Total Production from PM1 & PM2 (Fy 2021-22)
			PM1	PM2	
		Paper Production	200TPD	170TPD	111337.7 MT
		Non-Conventional Recovery Process (Soda Ash Production)	330 TPD	-	31836.98 MT
		Conventional Recovery Process (CRP) (Caustic Production)	700 TPD	-	4221
		CRP Power generation	12 MW/day	-	69385.3
		Hard Wood Fiber Line Pulping	330 TPD	-	24385
		Agro residue Pulping	128 TPD	-	98577.87 MT
	Co-generation power plant	---	10 MWH	35929.8	
Units	M/s Naini Papers Limited (PM1 & PM2)				
4	Year of establishment	PM1-1997 & PM2-2005			
5	Date of the last environmental statement submitted.	30/09/2021			

Naini Papers Ltd- Environmental Statement (Fy-2021-22)

~ 1 ~

NAINI PAPERS LTD
M Moradabad Road
KASHIPUR (U S Nagar)

NAINI PAPERS LIMITED (PM1 & PM2)

PART-B

Water and Raw Material Consumption: (Calculation based on total consumption in PM1 & Pm2)

1- Water Consumption in m³/d

Process and Boiler feed	10920 m ³ /day
Cooling & Chillers	405 m ³ /day
Domestic Used	120 m ³ /day

Name of Products	Water Consumption (Process + Boiler Feed) per unit of product (m ³ /T)	
	During the previous financial year 2020-21	During the current financial Year 2021-22
Writing And Printing Grade of Paper	36.0	35.0

2-Raw Material & Fuel Consumption

Name of Raw materials	Name of Products	Consumption of Raw material per Ton of Finished product	
		During the previous financial year 2020-21	During the current financial year 2021-22
Wheat Straw	Writing and Printing Grade of Paper	347 kg/T	222 kg/T
Bagasse		1391 kg/T	1228 kg/T
Hard Wood		--	1122.7 kg/T
Soap Stone		148 kg/T	82 kg/T
Soft Wood		85 kg/T	24 kg/T
Rice Husk		542 kg/T	1124 kg/T
Bagasse Pith		935 kg/T	1046 kg/T
Wood Chips (For Fuel)		188 kg/T	0.13 kg/T
Diesel		14 ltr/T	7.6 ltr/T

Naini Papers Ltd- Environmental Statement (Fy-2021-22)

~ 2 ~

NAINI PAPERS LTD
M Moradabad Road
JUR (H & Nagar

NAINI PAPERS LIMITED (PM1 & PM2)

PART-C

Pollution Generated

(Parameter as specified in the consent issued)

a- Water Pollution Load (PM1)

Pollutants	Quantity of Pollutants discharged (mass/day)	Concentration of Pollutants discharged (mass/volume)	Percentage of variation from prescribed standards with reasons
Effluent discharged	3468 m ³ /day	-	ETP plant strictly supervised by well trained staff
pH	--	7.29	
COD	0.425 MT/day	116.01 mg/l	58 % better than norm
BOD	0.049 MT/day	14.2 mg/l	71 % better than norm
TSS	0.074 MT/day	21.3 mg/l	71 % better than norm
AOX	0.03 MT/day	7.1 mg/l	79 % better than norm

Note:-

- (i) Calculations based on total effluent discharged.
- (ii) Source of data: Test report issued by NABL accredited laboratory.

Water Pollution Load (PM2)

Pollutants	Quantity of Pollutants discharged (mass/day)	Concentration of Pollutants discharged (mass/volume)	Percentage of variation from prescribed standards with reasons
Effluent discharged	3484 m ³ /day	-	ETP plant strictly supervised by well trained staff
pH	--	7.22	
COD	0.386 MT/day	110.88 mg/l	56 % better than norm
BOD	0.049 MT/day	14.2 mg/l	71 % better than norm
TSS	0.077 MT/day	22.22 mg/l	74 % better than norm
AOX	0.02 MT/day	4.5 mg/l	56 % better than norm

Note:-

- (i) Calculations based on total effluent discharged.
- (ii) Source of data: Test report issued by NABL accredited laboratory.

NAINI PAPERS LIMITED (PM1 & PM2)

b-Air Pollution Load (PM1)

Stack emission from boiler

Pollutants	Quantity of Pollutants discharged (mass/day)	Concentration of Pollutants discharged (mass/volume)	Percentage of variation from prescribed standards with reasons
Particulate Matter (PM)	58 kg/day	61.5 mg/Nm ³	No deviation from prescribed standards (ESP attached to stack & supervised by well trained staff)

Note:

- (i) Operational hour considered to be average 24 hours/day
- (ii) Source of data: Test Report issued by NABL accredited laboratory.

Air Pollution Load (PM2)

Stack emission from boiler

Pollutants	Quantity of Pollutants discharged (mass/day)	Concentration of Pollutants discharged (mass/volume)	Percentage of variation from prescribed standards with reasons
Particulate Matter (PM)	43 kg/day	45.0 mg/Nm ³	No deviation from prescribed standards (ESP attached to stack & supervised by well trained staff)

Note:

- (i) Operational hour considered to be average 24 hours/day
- (ii) Source of data: Test Report issued by NABL accredited laboratory.

Naini Papers Ltd- Environmental Statement (Fy-2021-22)

~ 4 ~

NAINI PAPERS LTD
7 K M Moradabad Road
ASHIPUR (U S Nagar)

NAINI PAPERS LIMITED (PM1 & PM2)

PART-D

HAZARDOUS WASTES

(As specified under Hazardous Wastes (Management & Handling) Rules, 1989 and amended 2016)

Hazardous Wastes	Total Quantity (Kg)	
	During the previous financial year 2020-21	During the current financial year 2021-22
1. From Process a- Used Oil b- Lead Battery	2100 ltr Purchased on buy back system	2500 ltr Purchased on buy back system
2. From Pollution Control Facilities	Nil	Nil

PART - E

SOLID WASTES:

Solid Wastes	Total Quantity (Kg)	
	During the previous financial year 2020-21	During the current financial year 2021-22
a. From process Boiler Ash	5933000	16564000
b. From Pollution Control Facility (ETP Sludge)	6480000	4142000
c. Quantity recycled or re-utilized within the unit. (Pith used in boiler)	43631620	116491000

Naini Papers Ltd- Environmental Statement (Fy-2021-22)

~ 5 ~

NAINI PAPERS LTD
K M Mohan Road
PUR (U S Nagar

NAINI PAPERS LIMITED (PM1 & PM2)

PART – F

Please specify the characteristics (in terms of concentration and quantum) of hazardous as well as solid wastes and indicate disposal practice adopted for both these categories of wastes.

Name of Solid Waste	Characteristics	Method of Collection	Method of Disposal
1- Hazardous Wastes			
Used Oil	Oil Emulsion	Stored in non-leakage PVC drums placed on an impervious floor	Sold to Authorized Vendor (M/s Gulshan Chemicals Shamli, Muzaffer Nagar (U.P))
2- Other Solid Waste			
Boiler Ash	Silica- Unburned Carbon	Directly loaded on trolleys, covered with HDPE	For land filling or in farmers field as per requirement
ETP Sludge	Organic- 80 % Inorganic- 20 %	Stored on impervious RCC platform	Stored on impervious RCC platform in factory premise

PART-G

Impact of the pollution control measures taken on conservation of natural resources and consequently on the cost of production

a) Air Pollution Control Devices:

ESP-

State-of-the-art fugitive emission control system, Electro Static Precipitator (ESP) has been provided in the all Boiler. The ESPs are operated regularly to control air pollution emanating from boiler stack. This has helped in minimizing the air pollution to the extreme low side, vis-à-vis Meeting the norms. The pollution control systems have an insignificant contribution towards cost of production in long-term aspects.

NAINI PAPERS LIMITED (PM1 & PM2)

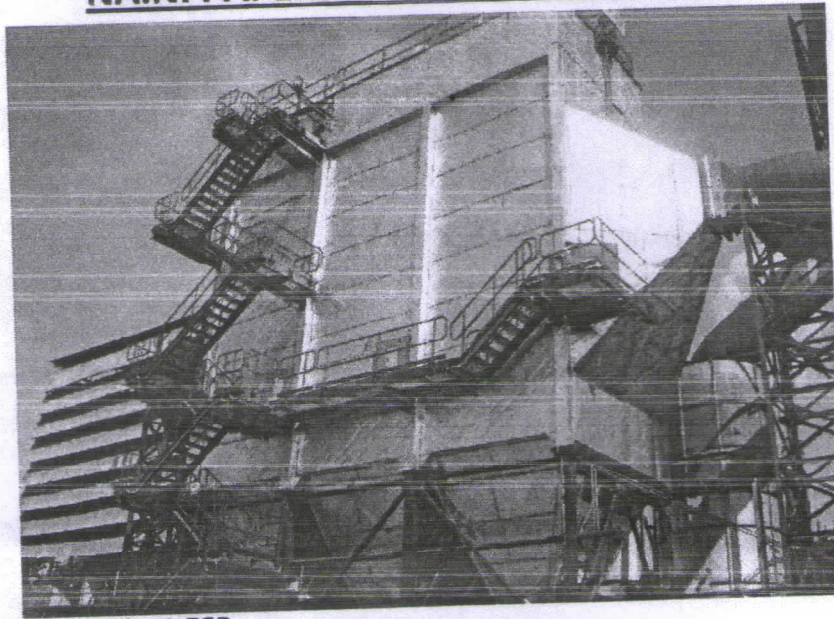


Fig-1 ESP

Ash Handling System-

Ash generated by boilers is stored in an advance closed system which is fitted with water sprinkle. With this ash does not lift with air at time of loading.

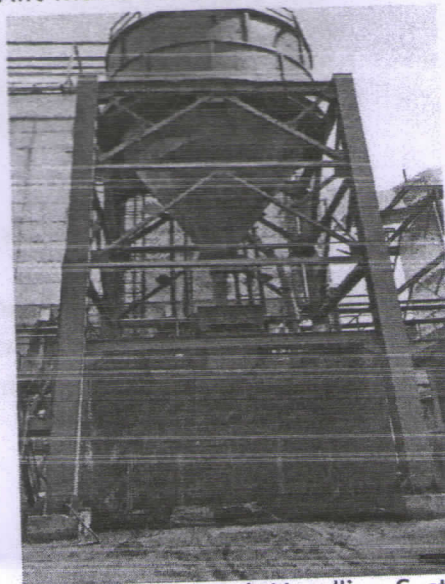


Fig- 2 Boiler Ash Handling System

Conveyor for Fuel & Raw Material Handlings

The conveyer belts are used in handling of raw materials and boiler fuel its enclosed with MS Sheet and minimizes the air pollution.

NAINI PAPERS LIMITED (PM1 & PM2)

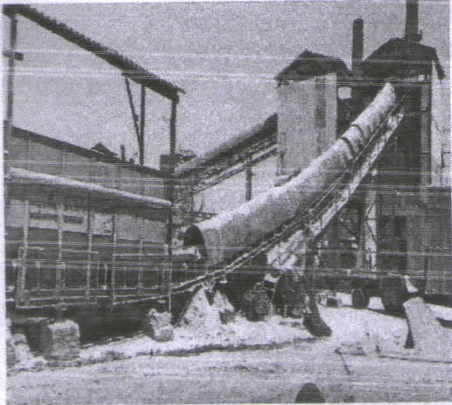


Fig- 3 Raw Material Handling Belt



Fig-4 Boiler Fuel Handling Belt

Water Sprinkling on Raw Materials

ETP treated water is sprinkled over stack of raw materials, & suppress the dust particle.

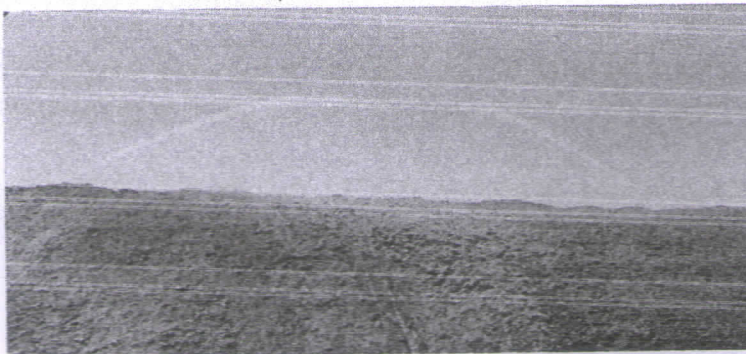


Fig-5 Raw Material Stack

b- Water Pollution Control Devices:

A sophisticated Effluent Treatment Plant has been installed and operated regularly to control water pollution originating from mill. The ETP has been facilitated with tertiary Treatment system. Approx. 40% of secondary treated effluent is reused in the process and other allied activities inside the mill.

c- Waste Minimization:

Waste minimization is an integral part of production process. Almost all the Measures outlined by the Waste Minimization Manual have been implemented in the mill.

d) Greenbelt:

A dedicated greenbelt covering about 30% of the total plant area has been developed and all local species have been planted. This could help to reduce air pollution and create a better Environment.

NAINI PAPERS LIMITED (PM1 & PM2)

PART- H

Additional measures/investment proposal for environmental protection including abatement of pollution.

a) Ground water Measures:

Installed six Piezometer inside and outside of company premises to assess the status of ground water level

b) Surveillance Monitoring:

(i) Ambient air quality is continuously monitored by **Online Continues Ambient Air Quality Monitoring System** and also quarterly monitored by NABL certified laboratory.

(ii) ETP final discharge is continuously monitored by **Online Effluent Monitoring System** and offline also monitored by NABL certified laboratory on monthly basis.

(i) Boiler stack emission is continuously monitored by **Online Continues Suspended Particular Monitoring System** and also six monthly monitored by NABL certified laboratory.

(iii) The monitoring and analysis data could be useful to determine, performance of Pollution control strategies as advised by implementing authorities and work to bring down the pollution level, or installation of any new and additional control measures, if required.

PART -I

MISCELLANEOUS:

Any other particulars in respect of environmental protection and abatement of pollution.

The Following measures were taken for environmental protection and amendment of pollution

- 1- Installed two new Aspirator in aeration tank
- 20 nos Gabion structures maintenance for ground water recharge.
- 3- Planted approx. 2000 plants in company premises.
- 4- Distributed Approx. 1000 cotton bag for minimization of plastic bag usage.
- 5- Looping of water.
- 6- Conducted in-house training related to ETP operation & maintenance, water conservation, Housekeeping etc.
- 7- Initiatives for Energy and Water Conservation.
- 8- CSR activities in nearby areas.

Naini Papers Ltd- Environmental Statement (Fy-2021-22)

